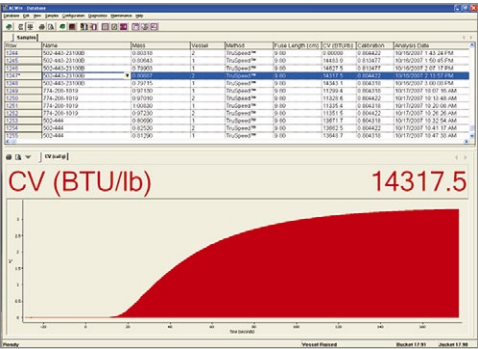


Easy-to-Use Operating Software

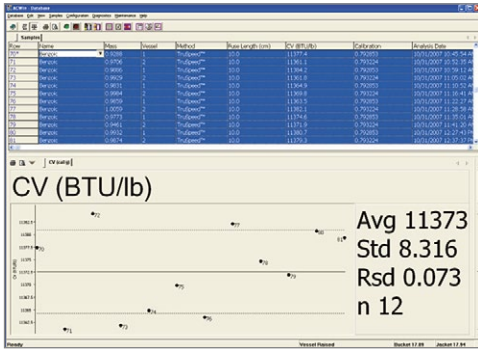
Simplified data handling, customisable data reporting/exporting, and a number of user-defined settings make the AC600 software flexible and easy to operate. With virtually unlimited storage space and compatibility with various Laboratory Information Management Systems (LIMS), this software is designed for seamless interaction

with any operator or customer environment. A convenient on-board help manual allows quick access to information without leaving the instrument. The software also supports compliance to FDA regulations 21 CFR Part 11 for a closed analytical system.

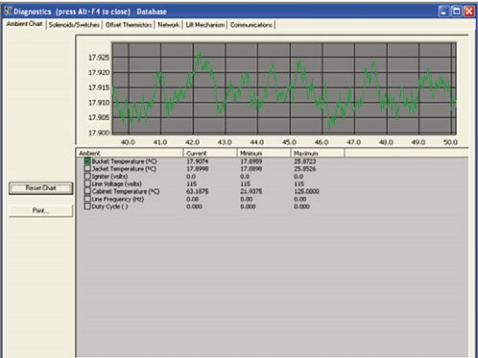
AC600 Semi-Automatic Calorimeter



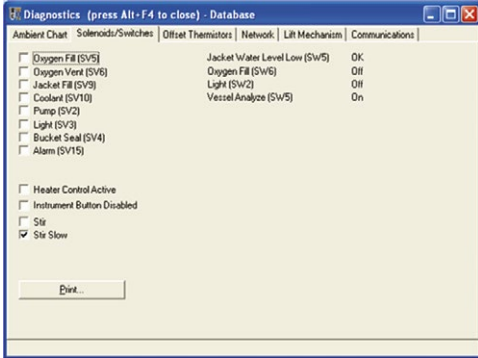
Seamlessly manage data and plots



Integrated control charts and statistical calculations



Monitor real-time internal component readings



Expanded interactive diagnostic screens to aid in troubleshooting and improve serviceability



LECO – Your Source for Total Analytical Solutions

TGA801 Thermogravimetric

- Determines moisture/ash or mass-loss in various organic samples
- Expanded temperature control (up to 1,000 °C) with variable atmospheres and ramp rates
- Complies with ASTM-approved methodology



SC832 Sulfur/Carbon

- Simple, fast sulfur/carbon determination
- High-efficiency furnace system design
- CORNERSTONE® brand software platform with touch-screen interface



ISO-9001:2015 Q-994 | LECO is a registered trademark of LECO Corporation.

LECO Corporation
3000 Lakeview Avenue | St. Joseph, MI 49085
Phone: 269-985-5496
info@leco.com | www.leco.com

LECO Europe
eu.leco.com

LECO
EMPOWERING RESULTS

LECO
EMPOWERING RESULTS

AC600 Semi-Automatic Calorimeter

Built on a collaboration of customer input and sound engineering, the LECO AC600 Semi-Automatic Calorimeter provides fast and accurate calorific results for various organic materials, including coal, coke, fuel oils, and waste materials. Its unique design combines state-of-the-art hardware and software technology with automation and an increased ease of operation for improved instrument performance and throughput.

An advanced thermodynamic model (TruSpeed® Mode), optimal automation, superior design, and improved ergonomic elements enable a repeatable, rapid 5.0 minute analysis time without compromising accuracy, precision, operator comfort, or convenience.



Maximise Throughput with Integrated Automation and Rapid Analysis Times

Automated Features Boost Productivity

- All water filling, draining, and volume measurement, as well as control of heating and cooling water, are automatically handled within the instrument
- Automated raising, lowering, and equilibration of the vessel ensure the vessel is equilibrated to the bucket and jacket water
- Automatic sealing of bucket and jacket chambers enable the precise and repeatable measurement of water in the bucket chamber

Rapid Analysis Times

- TruSpeed Mode developed by LECO makes it possible to achieve 5.0 minute analysis times, without compromising accuracy or precision
- Optional two-vessel operation maximises throughput by allowing you to prepare the second vessel and sample while the current sample is being analysed, resulting in the analysis of 12 samples per hour



Instrument Highlights and Features



Ergonomically-Designed Vessel

- Reduced vessel weight with rounded surfaces promotes easy handling of the vessel, while enhancing the heat transfer rate of the vessel
- Vessel cap secures within 1.5 revolutions, greatly reducing repetitive motion and allowing for quicker vessel preparation
- Simple and clean electrical contact and oxygen depressurisation port reduces oxygen and thermal leak points, improves accessibility of rinsing vessel, and decreases overall points of maintenance within the vessel



Vessel Station Enhances Ease-of-Use

- Integrated vessel charging and depressurisation ports are equipped with quick-release handles to speed vessel charging and depressurisation process
- Convenient wash basin area for rinsing the vessel and sample preparation
- Height-adjustable cap rack for convenient loading of sample crucible and preparation of the vessel fuse

